

SKK EMBA



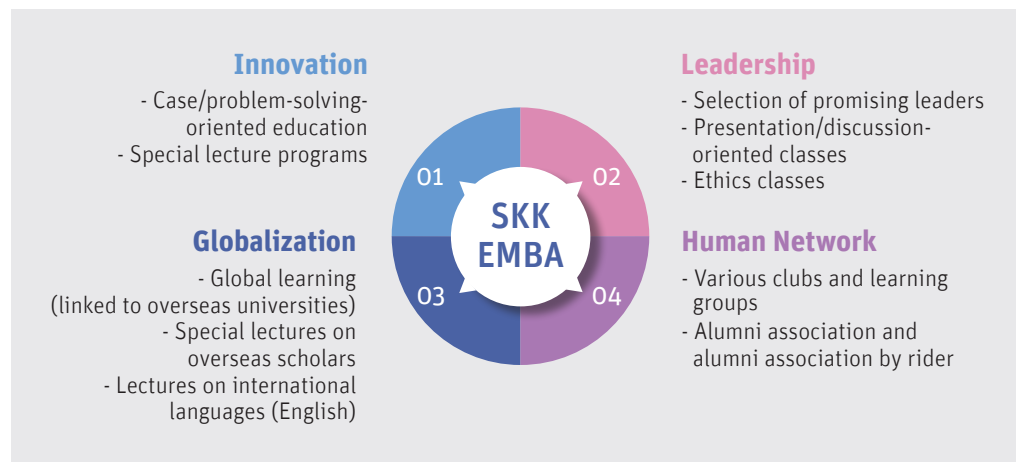


About the department

The EMBA is the most innovative part-time MBA program in the country, helping business people and executives master the skills to become international leaders. Globalization, Leadership, and Innovation are the mission keywords of the EMBA program. This MBA degree can be earned by attending campus twice a week over a 2-year period.

Vision & Mission

Developing Global Business Leaders



Ranking & Facts

1st

MBA program in Korea

82th

THE WORLD University Ranking

100st

QS WORLD University Ranking

19,798

Undergraduate Students

7,213

Graduate Students Degrees

77 / 836

Alumni Countries/Universities

Activities

Attend 2 days a week and obtain an MBA



It is a time-consuming burden for many office workers to work and attend courses at the same time, which is a big consideration when choosing an MBA program. The EMBA at Sungkyunkwan University Business School is a program that solves this challenge, operating intensive classes on Saturdays as well as evening classes during the week.

Strengthen practical skills with problem/case/discussion-oriented curriculum



The EMBA program enhances practical skills by operating a problem/case/discussion-oriented curriculum. Through special lectures by various working-level personnel, students' future competitiveness can be strengthened further.

Enhance global competency with global learning seminar twice a year (varies depending on the situation)



Using the summer and winter vacations, we hold a global learning seminar. Visiting foreign universities and companies, including those from Europe and the United States as well as Asia conduct classes on cross-cultural issues and prepare team-by-team reports.

Select EMBA degree title



EMBA degrees are divided into five specific titles: Management, ICT & Data Analytics, Marketing, Accounting, and Finance. If students acquire the required number of credits for one of the five majors they choose, they will be granted an EMBA degree with the respective title.

SKKU Ranking & Facts

88

2021
QS World University
Ranking #88

10

2021
THE Asia University
Ranking #10

01

2020
#1 Private Comprehensive
University in JoongAng
Daily University Ranking

02

2020
#2 The Top 1% Most Cited
Articles among Korean
Universities in National
Research Foundation

01

2020
#1 National Customer
Satisfaction Index for
14 consecutive years

110

SKKU & Samsung –
110 joint research projects

754

International Partnership
with 754 universities in
74 countries worldwide

1398

Founded in 1398
Oldest University in
East Asia



EMBA, Sungkyunkwan University(SKKU)

25-2 SUNGKYUNKWAN-RO, JONGNO-GU, SEOUL 03063, KOREA



e-mail: emba@skku.edu



Tel: +82-2-760-0956, 0958



Website: <https://emba.skku.edu/emba/>



Facebook: <https://www.facebook.com/skkemba/>

